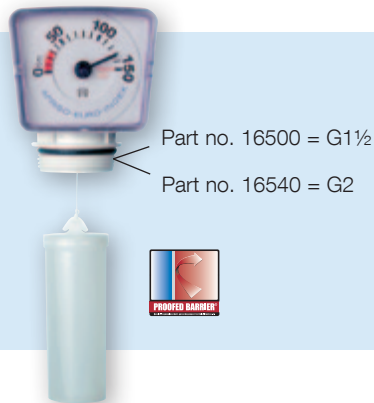


Mechanical level indicators



MT-Profil R - 1½ and - 2

Application For continuous level measurement in tanks containing fuel oil EL, diesel fuel, biodiesel and water. For tanks heights from 0 to 250 cm.

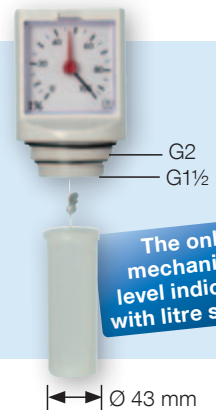
Description Universal, mechanical level indicator with plastic planetary gear. Measuring range is adjustable from 0 to 250 cm by reversible scale. With reversible scale 0–150 cm and 0–250 cm for fast adaptation to the tank height. Odour-tight – suitable for flood areas.

Technical specifications **Measuring range (tank height)**
0/150 to 0/250 cm

Displayed values
0/150 or 0/250 liquid level in cm

Connection thread
G1½ or G2

Housing/float
Display: ABS, impact-resistant
Float: PE-HD



Unimes

For continuous level measurement in tanks containing fuel oil EL, diesel fuel, biodiesel and other low-viscosity media which do not attack materials of the indicator. For tank heights from 900 to 2,000 mm.

Universal mechanical level indicator with fully adjustable brass and nickel silver movement. The pointer deflection amounts to 270° at tank heights and diameters from at least 900 mm to 2,000 mm maximum. Indication in percentage of liquid level, litre scale can be retrofitted. With reference pointer for consumption monitoring.

Measuring range (tank height)
0/900 to 0/2,000 mm

Displayed values
0/100 % liquid level

Connection thread
G1½ and G2

Housing/float
Display: ABS, impact-resistant
Window: SAN
Float: PE-HD

Additional litre scales
For use with Unimes for all standard, cylindrical horizontal tanks. When ordering, please specify the shape and capacity of tank.

Special scales
For Unimes and tanks of any shape and dimension. When ordering, please include tank drawing or bearing chart.



See page 11 for suitable reducers.

DG: G			Part no.	Price €
Unimes	1	-	11500	
Additional litre scales	1	1	11900	
Special scales	1	1	11999	
MT-Profil R - 1½	1	75	16500	
MT-Profil R - 2	1	75	16540	
Reducer G2 x G1½	10	-	20903	