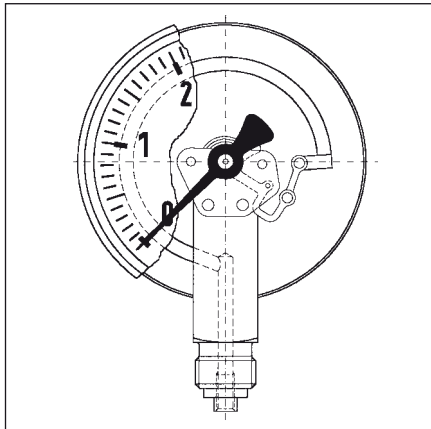


Bourdon tube pressure gauges for welding applications EN 562



Application

For welding systems and cutting machines or similar processes.

Type

D 2/D 3

Nominal size

50 – 63

Version

EN 562

Accuracy class (EN 562)

2.5

Ranges (EN 562)

0/1 to 0/400 bar
-1/0 to -1/+15 bar

Application area

Static load:

$\frac{3}{4}$ x full scale value

Dynamic load:

$\frac{2}{3}$ x full scale value

Short term:

full scale value

Operating temperature range

Medium: $T_{max} = +60$ °C

Ambient: $T_{min} = -20$ °C

$T_{max} = +60$ °C

Temperature performance

Indication error when the temperature of the measuring element deviates from 20 °C:

rising temp. approx. ± 0.4 %/10K

falling temp. approx. ± 0.4 %/10K
percentage of full scale value

Protection

IP 32 (EN 60529)

Standard version

Connection

Brass, bottom or centre back,
with damping in the pressure inlet
G $\frac{1}{4}$ B – spanner size 14
(EN 837-1/7.3)

Measuring element

Bourdon tube element, copper alloy
 ≤ 40 bar „C“ type bourdon tube
 > 40 bar helical tube
(copper portion in case of acetylene
< 70 %)

Degree of cleanliness

Wetted parts are oil and grease free.

Movement

Brass

Dial

Aluminium, white
Dial marking black

Marking

„Oxygen“ for oxygen and symbol
for „free from oil and grease“
„Acetylene“ for acetylene

Pointer

Aluminium, black

Housing

D 2 – sheet steel (gold or black)
D 3 – stainless steel 304 with rear
blow-out

Front glass

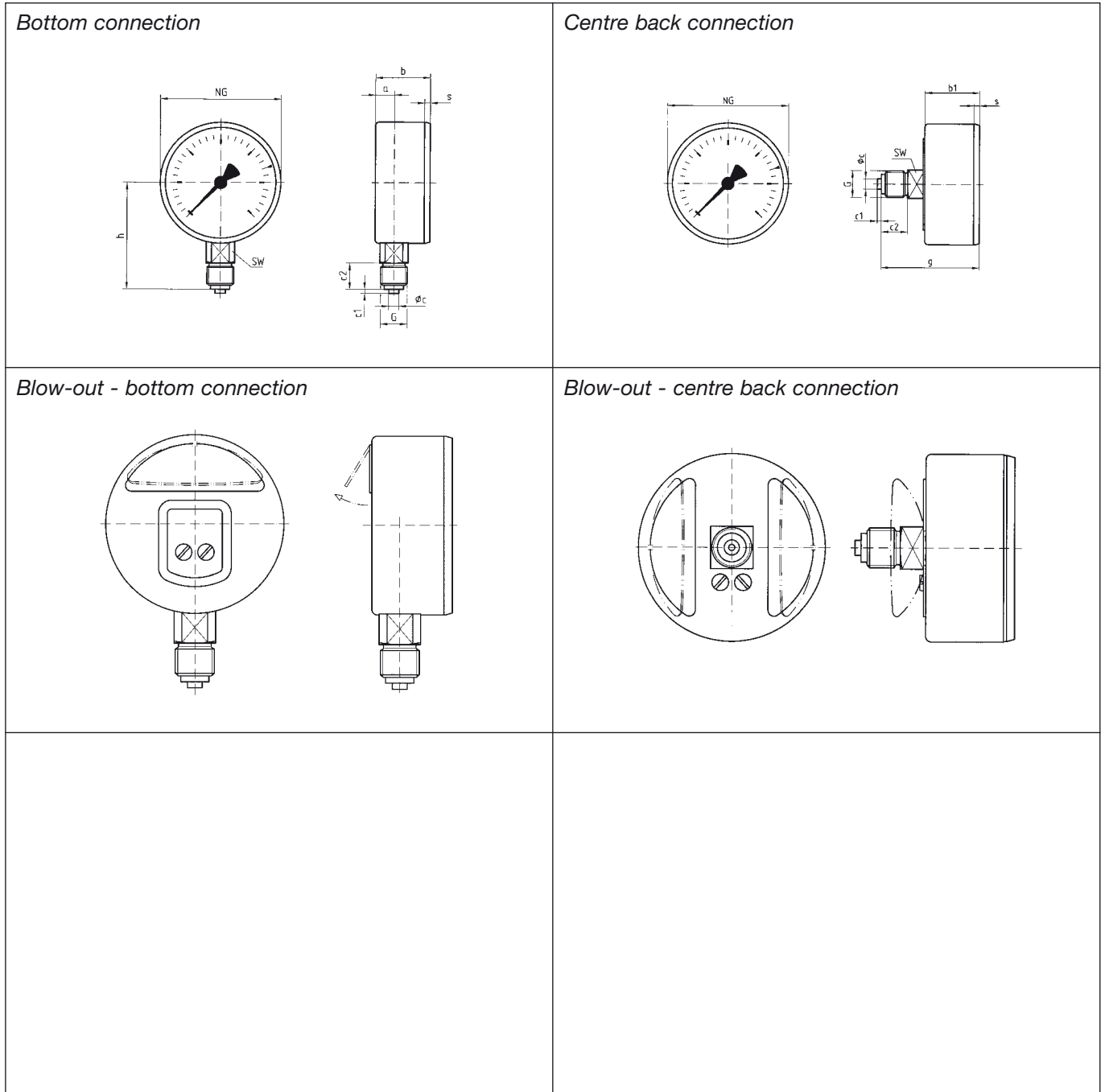
Plastic, snap-in

Options

- Litre scale for argon/CO₂
- Other connection threads

Bourdon tube pressure gauges for welding applications Type D 3 – NG 50/63

Housing types and dimensions

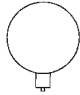
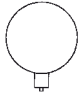
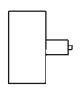
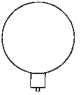
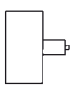

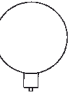


Dimensions (mm)

Nominal size (NG)	a	b	b1	$\varnothing c$	c1	c2	G	g	h	s	SW				
50	10.5	29	26	5	2	13	G1/4B	47	46	3.8	14				
63	11	29.5	29.5	5	2	13	G1/4B	50.5	53	3.7	14				

Bourdon tube pressure gauges for welding/ gas applications

DG: M Version for welding applications EN 562

Type	RF63ST, D301	RF50GT, D301	RF50GT, D311	RF63GT, D301	RF63GT, D311	RF50GT, D302 ⁴⁾	RF63GT, D302 ⁴⁾
Version							
Housing Ø	63	50	50	63	63	50	63
Housing	Stainless steel 304 with blow-out						
Meas. elem.	CU alloy, oil and grease free	Copper alloy				Stainless steel 316 Ti or 316 L	
Accuracy class	2.5	1.6	1.6	1.6	1.6	1.6	1.6
Connection	G1/4B	G1/4B	G1/4B	G1/4B	G1/4B	G1/4B	G1/4B
Range (bar)	Part no.	Part no.	Part no.	Part no.	Part no.	Part no.	Part no.
Price €							
-1/0	---	85051301GT	85051311GT	85101301GT	85101311GT	85051302GT	85101302GT
-1/+0,6	---	85052301GT	85052311GT	85102301GT	85102311GT	85052302GT	85102302GT
-1/+1,5	---	85053301GT	85053311GT	85103301GT	85103311GT	85053302GT	85103302GT
-1/+3	---	85054301GT	85054311GT	85104301GT	85104311GT	85054302GT	85104302GT
-1/+5	---	85055301GT	85055311GT	85105301GT	85105311GT	85055302GT	85105302GT
-1/+9	---	85056301GT	85056311GT	85106301GT	85106311GT	85056302GT	85106302GT
-1/+15	---	85057301GT	85057311GT	85107301GT	85107311GT	85057302GT	85107302GT
Price €							
0/0,6	---	85059301GT	85059311GT	85109301GT	85109311GT	85059302GT	85109302GT
0/1	88300301 ¹⁾	85060301GT	85060311GT	85110301GT	85110311GT	85060302GT	85110302GT
0/1,6	88301301 ¹⁾	85061301GT	85061311GT	85111301GT	85111311GT	85061302GT	85111302GT
0/2,5	88302301 ¹⁾	85062301GT	85062311GT	85112301GT	85112311GT	85062302GT	85112302GT
0/4	88303301	85063301GT	85063311GT	85113301GT	85113311GT	85063302GT	85113302GT
0/6	88304301 ²⁾	85064301GT	85064311GT	85114301GT	85114311GT	85064302GT	85114302GT
0/10	88305301	85065301GT	85065311GT	85115301GT	85115311GT	85065302GT	85115302GT
0/10	88306301 ³⁾	---	---	---	---	---	---
0/16	88307301 ²⁾	85066301GT	85066311GT	85116301GT	85116311GT	85066302GT	85116302GT
0/25	88308301	85067301GT	85067311GT	85117301GT	85117311GT	85067302GT	85117302GT
0/40	88309301 ¹⁾	85068301GT	85068311GT	85118301GT	85118311GT	85068302GT	85118302GT
0/40	88310301 ²⁾	---	---	---	---	---	---
Price €							
0/60	---	85069301GT	85069311GT	85119301GT	85119311GT	85069302GT	85119302GT
0/100	---	85070301GT	85070311GT	85120301GT	85120311GT	85070302GT	85120302GT
0/160	---	85071301GT	85071311GT	85121301GT	85121311GT	85071302GT	85121302GT
0/250	88314301	85072301GT	85072311GT	85122301GT	85122311GT	85072302GT	85122302GT
0/315	88315301 ²⁾	85079301GT	85079311GT	85129301GT	85129311GT	85079302GT	85129302GT
0/315	88316301	---	---	---	---	---	---
0/400	88317301	85073301GT	85073311GT	85123301GT	85123311GT	85073302GT	85123302GT

1) with inscription „Acetylene“ 2) with inscription „Oxygen“ 3) Scale 0/30 l/min „Argon“ red, 0/28 l/min „CO₂“ black
4) additional costs for back connection € – refer to page 326 for other additional costs