

In-line chemical seal RD 80 intermediate flange version



- Easy intermediate flange installation in the pipe
- Various nominal sizes
- Various nominal pressures
- Special materials (option)



Application For use with Bourdon tube pressure gauges, pressure transducers or pressure switches. For flowing, corrosive and highly viscous media, for direct installation in pipes.

Technical specifications

Process connection

Stainless steel 316 L,
for flanges as per EN 1092-1
Type B 2,
DN 25 to DN 100 or
ASME B 16.5, 1" to 4"

Diaphragm

Stainless steel 316 L,
welded to body, no dead space

Instrument connection

Stainless steel 316 L
Female thread G $\frac{1}{2}$

Pressure transmission liquid

Paraffin oil (FM 09)

Pressure ranges

See price list section

Nominal pressure

PN 4 to 400
Class 150 to 6000

Options

- Coatings
- Cooling element (> 100 °C)
- Capillary tube
- Other filling liquids

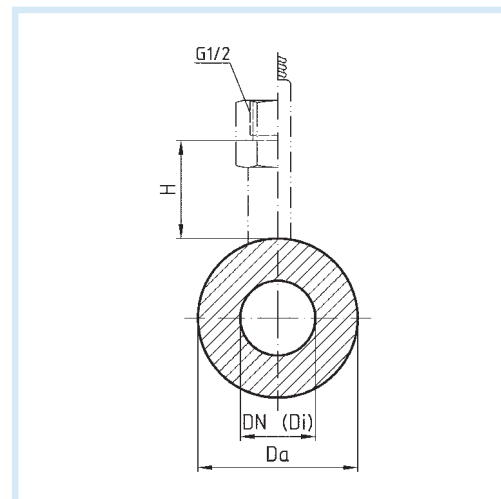
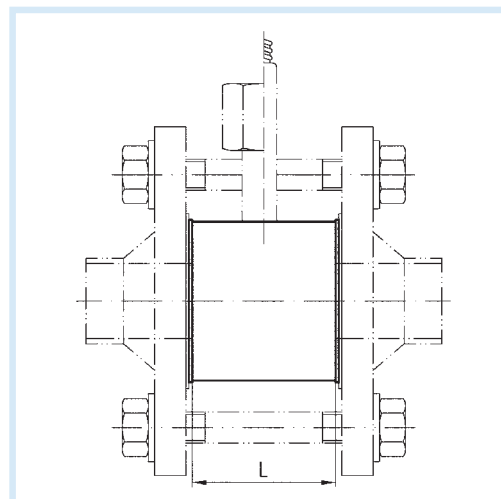
Dimensions (mm)

Flange connection as per EN 1092-1 type B 2

DN	Di	PN	Da	L	H
25	28.5	4-400	68	100	29
40	43.1	4-400	88	100	29
50	54.5	4-400	100	100	29
65	70.3	4-400	120	100	29
80	82.5	4-400	138	60	29
100	107.1	4-400	160	60	29

Flange connection as per ASME B 16.5

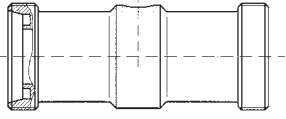
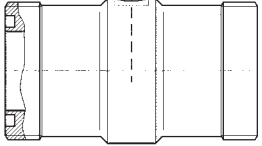
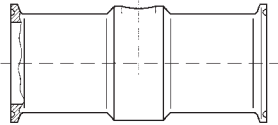
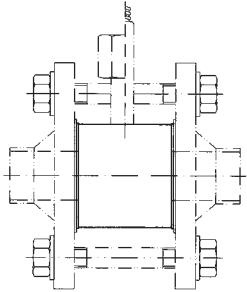
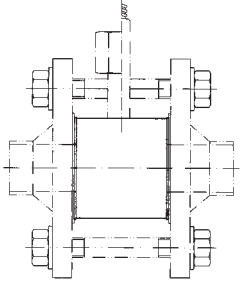
DN	Di	PN	Da	L	H
1"	28.5	150-6,000	50	100	29
1½"	43.1	150-6,000	73.2	100	29
2"	54.5	150-6,000	91.9	100	29
3"	82.5	150-6,000	127	60	29
4"	107.1	150-6,000	157.2	60	29



See page 423 for prices.

In-line chemical seals RD 50/51/60/80

DG: M

	RD 50 for hygienic processes, male thread DIN 11851							
	Nominal diameter DN	Nominal pressure PN	Minimum range* (in bar) at nominal size				Part no.	Price €
			63	100	160	DMU		
	15	40	1.6	---	---	4	31952W	
	25	40	1.6	2.5	---	1	31365W	
	32	40	1	2.5	---	1	31953W	
	40	40	1	2.5	4	1	31366W	
	50	25	1	2.5	4	0.6	31367W	
80	25	1	2.5	4	0.6	31369W		
	RD 51 for hygienic processes, threaded socket SMS 1147							
	Nominal diameter	Nominal pressure	Minimum range* (in bar) at nominal size				Part no.	Price €
			63	100	160	DMU		
	1"	40	1.6	2.5	---	1.6	31371W	
	1½"	40	1.6	2.5	4	1.6	31372W	
	2"	40	1	1.6	2.5	1.6	31373W	
	2½"	25	1	1.6	2.5	1.6	31374W	
3"	25	1	1.6	1.6	1.6	31375W		
	RD 60 clamp connection ISO 2852							
	Nominal diameter	Nominal pressure	Minimum range* (in bar) at nominal size				Part no.	Price €
			63	100	160	DMU		
	1"	16	1.6	2.5	---	1.6	31377W	
	1½"	16	1.6	2.5	4	1.6	31378W	
	2"	16	1.6	2.5	2.5	1	31379W	
2½"	16	1.6	2.5	2.5	1	31380W		
3"	10	1.6	2.5	2.5	1	31381W		
	RD 80 intermediate flange version for flanges as per EN 1092-1 type B 2							
	Nominal diameter	Nominal pressure	Minimum range* (in bar) at nominal size				Part no.	Price €
			63	100	160	DMU		
	25	4–400	1.6	2.5	---	1.6	31355	
	40	4–400	1.6	2.5	4	1.6	31356	
	50	4–400	1.6	2.5	2.5	1	31357	
65	4–400	1.6	2.5	2.5	1	31956		
80	4–400	1.6	2.5	2.5	1	31358		
	RD 80 intermediate flange version for flanges as per ASME B 16.5							
	Nominal diameter	Nominal pressure	Minimum range* (in bar) at nominal size				Part no.	Price €
			63	100	160	DMU		
	1"	150–6,000	1.6	2.5	---	1.6	31360	
	1½"	150–6,000	1.6	2.5	4	1.6	31361	
	2"	150–6,000	1.6	2.5	2.5	1	31362	
3"	150–6,000	1.6	2.5	2.5	1	31363		
4"	150–6,000	1.6	2.5	2.5	1	31364		

* Valid for standard pressure transmission liquid with direct mounting (without capillary tube) at a room temperature and temperature of the medium of 20 °C.

i

See page 424 for extra charges for options, mounting and accessories.