

In-line chemical seals RD 50/51/60 for hygienic processes



- For dairy fitting DIN 11851 and clamp connection ISO 2852
- No T piece required in pipe
- Easy, fast installation in pipe



Application For use with Bourdon tube pressure gauges, pressure transducers or pressure switches. For flowing, corrosive and highly viscous media; designed for direct installation in pipes. Typical applications areas:

- Biochemical applications
- Food and beverages industry
- Beverages industry
- Pharmaceutical industry

Technical specifications

Process connection

RD 50: DIN 11851, 316 L, male thread DN 15 to DN 100,
RD 51: SMS 1147 1" to 3"
RD 60: Clamp ISO 2852, 316 L 1/2" to 3"

Diaphragm

Stainless steel 316 L, no dead space, welded to body

Instrument connection

Stainless steel 316 L
Welded connection

Pressure transmission liquid

Paraffin oil (FM 09), FDA-listed

Pressure ranges

See price list section

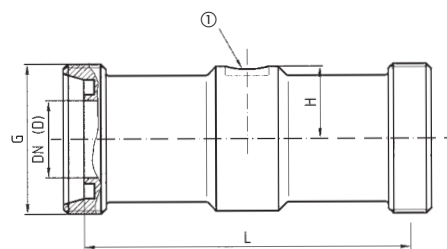
Nominal pressure

PN 25 and PN 40

Options

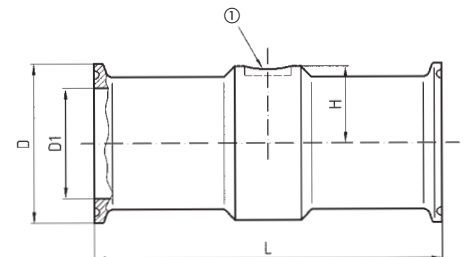
- Cooling element (> 100 °C)
- Capillary tube

Type RD 50 DIN 11851/DIN 11887



① Welded connection Ø 10 for instrument

Type RD 60 Clamp ISO 2852



① Welded connection Ø 10 for instrument

DN	PN	G	L	D	H
15	40	Rd34x1/8"	240	16	20
25	40	Rd52x1/6"	110	26	24
32	40	Rd58x1/6"	110	32	29
40	40	Rd65x1/6"	110	38	31.5
50	25	Rd78x1/6"	110	50	37
65	25	Rd95x1/6"	110	66	45
80	25	Rd110x1/4"	60	81	51.5
100	25	Rd130x1/4"	60	100	64

DN	PN	D	D1	L	H
1"	16	50.5	22.2	110	24
1½"	16	50.5	34.8	110	31.5
2"	16	64	47.8	110	37
2½"	16	77.5	60.3	110	45
3"	10	91	72.9	60	51.5
4"	10	119	97.6	60	51.5



See page 423 for prices.

In-line chemical seal RD 80 intermediate flange version



- Easy intermediate flange installation in the pipe
- Various nominal sizes
- Various nominal pressures
- Special materials (option)



Application For use with Bourdon tube pressure gauges, pressure transducers or pressure switches. For flowing, corrosive and highly viscous media, for direct installation in pipes.

Technical specifications

Process connection

Stainless steel 316 L,
for flanges as per EN 1092-1
Type B 2,
DN 25 to DN 100 or
ASME B 16.5, 1" to 4"

Diaphragm

Stainless steel 316 L,
welded to body, no dead space

Instrument connection

Stainless steel 316 L
Female thread G $\frac{1}{2}$

Pressure transmission liquid

Paraffin oil (FM 09)

Pressure ranges

See price list section

Nominal pressure

PN 4 to 400
Class 150 to 6000

Options

- Coatings
- Cooling element (> 100 °C)
- Capillary tube
- Other filling liquids

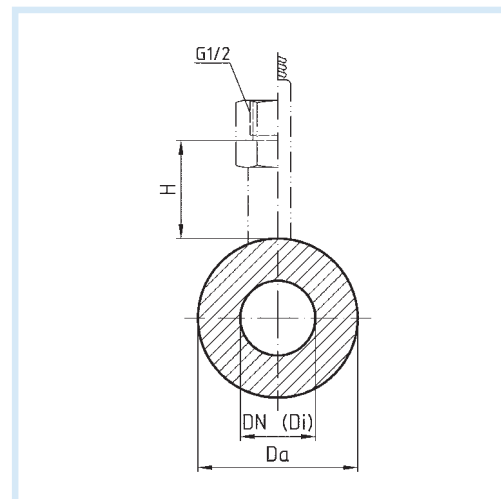
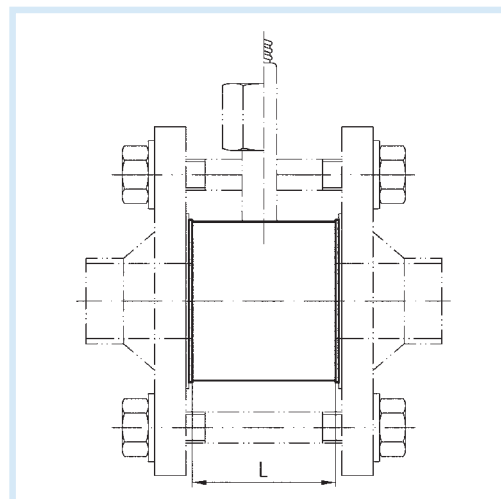
Dimensions (mm)

Flange connection as per EN 1092-1 type B 2

DN	Di	PN	Da	L	H
25	28.5	4-400	68	100	29
40	43.1	4-400	88	100	29
50	54.5	4-400	100	100	29
65	70.3	4-400	120	100	29
80	82.5	4-400	138	60	29
100	107.1	4-400	160	60	29

Flange connection as per ASME B 16.5

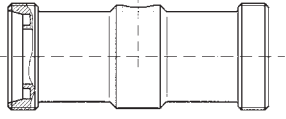
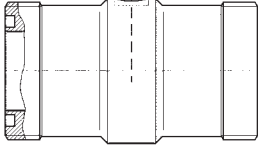
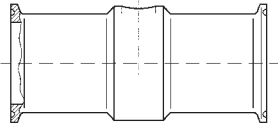
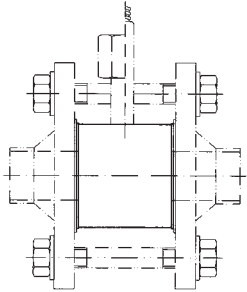
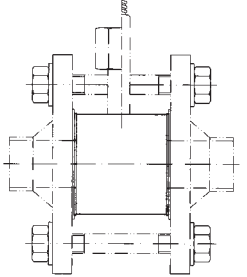
DN	Di	PN	Da	L	H
1"	28.5	150-6,000	50	100	29
1½"	43.1	150-6,000	73.2	100	29
2"	54.5	150-6,000	91.9	100	29
3"	82.5	150-6,000	127	60	29
4"	107.1	150-6,000	157.2	60	29



See page 423 for prices.

In-line chemical seals RD 50/51/60/80

DG: M

	RD 50 for hygienic processes, male thread DIN 11851							
	Nominal diameter DN	Nominal pressure PN	Minimum range* (in bar) at nominal size				Part no.	Price €
			63	100	160	DMU		
	15	40	1.6	---	---	4	31952W	
	25	40	1.6	2.5	---	1	31365W	
	32	40	1	2.5	---	1	31953W	
	40	40	1	2.5	4	1	31366W	
	50	25	1	2.5	4	0.6	31367W	
80	25	1	2.5	4	0.6	31369W		
	RD 51 for hygienic processes, threaded socket SMS 1147							
	Nominal diameter	Nominal pressure	Minimum range* (in bar) at nominal size				Part no.	Price €
			63	100	160	DMU		
	1"	40	1.6	2.5	---	1.6	31371W	
	1½"	40	1.6	2.5	4	1.6	31372W	
	2"	40	1	1.6	2.5	1.6	31373W	
	2½"	25	1	1.6	2.5	1.6	31374W	
3"	25	1	1.6	1.6	1.6	31375W		
	RD 60 clamp connection ISO 2852							
	Nominal diameter	Nominal pressure	Minimum range* (in bar) at nominal size				Part no.	Price €
			63	100	160	DMU		
	1"	16	1.6	2.5	---	1.6	31377W	
	1½"	16	1.6	2.5	4	1.6	31378W	
	2"	16	1.6	2.5	2.5	1	31379W	
2½"	16	1.6	2.5	2.5	1	31380W		
3"	10	1.6	2.5	2.5	1	31381W		
	RD 80 intermediate flange version for flanges as per EN 1092-1 type B 2							
	Nominal diameter	Nominal pressure	Minimum range* (in bar) at nominal size				Part no.	Price €
			63	100	160	DMU		
	25	4-400	1.6	2.5	---	1.6	31355	
	40	4-400	1.6	2.5	4	1.6	31356	
	50	4-400	1.6	2.5	2.5	1	31357	
65	4-400	1.6	2.5	2.5	1	31956		
80	4-400	1.6	2.5	2.5	1	31358		
	RD 80 intermediate flange version for flanges as per ASME B 16.5							
	Nominal diameter	Nominal pressure	Minimum range* (in bar) at nominal size				Part no.	Price €
			63	100	160	DMU		
	1"	150-6,000	1.6	2.5	---	1.6	31360	
	1½"	150-6,000	1.6	2.5	4	1.6	31361	
	2"	150-6,000	1.6	2.5	2.5	1	31362	
3"	150-6,000	1.6	2.5	2.5	1	31363		
4"	150-6,000	1.6	2.5	2.5	1	31364		

* Valid for standard pressure transmission liquid with direct mounting (without capillary tube) at a room temperature and temperature of the medium of 20 °C.

i

See page 424 for extra charges for options, mounting and accessories.