

Diaphragm seal MD 50/51 for screwed pipe connections (food)



- All materials FDA-listed
- Suitable for SIP/CIP
- No dead space
- Various standards available



Application Diaphragm seals MD 50/51 with food law compliant screwed pipe connection for hygienic process separation of pressure measuring and control units in pipes or tanks. For use with Bourdon tube pressure gauges, pressure transducers or pressure switches. For installation in hygienic processes without dead spaces. Typical applications areas:

- Food and beverages industry
- Dairies
- Beverage machines
- Breweries

Description All materials used are FDA-listed. The chemical seal and the measuring instrument are welded together, resulting in an inseparable single, shock- and vibration-resistant unit that does not require additional external protection. The chemical seals are available with various nominal diameters; due to their compact design, they are suitable for a wide range of applications.

Technical specifications

Type
MD 50 and 51

Process connections
MD 50: DIN 11851/11887 DN 25 to DN 80
MD 51: SMS 1147 1" to 3"

Material
Stainless steel 316 L, FDA-listed

Pressure transmission liquid
Paraffin oil (FM 09), FDA-listed

Pressure ranges
0.6 bar to 40 bar

Can be mounted to

- Bourdon tube pressure gauges
NG 50, 63, 80, 100, 160
- Pressure transducers (DMU)
- Pressure switches (DS)

Options

- Other designs (Südmo, Guth)
- Other materials
- Cooling element
- Capillary
- Other pressure transmission liquids
- Accessories such as union nuts and seals

- Other process connections:
MD 52: DIN 11864-1/11853-1 DN 25 to DN 80
MD 53: APV-RJT 1" to 3"
MD 54: IDF 1" to 3"
MD 55: APV-ISS 1" to 3"

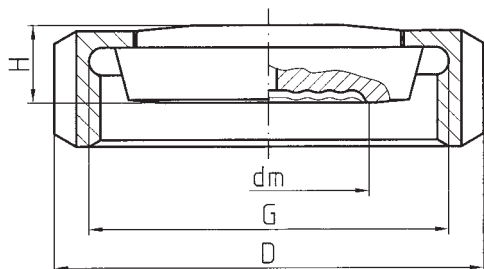


See page 410 for prices.

Diaphragm seals MD 50/51

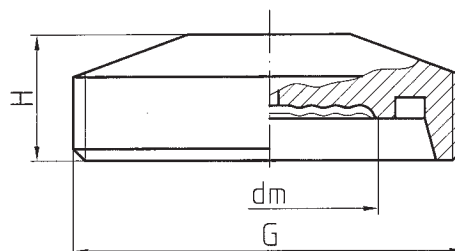
Types and dimensions (mm)

Tapered socket DIN 11851 type D/ DIN 11887 type B with grooved union nut DIN 11851 type F (female)



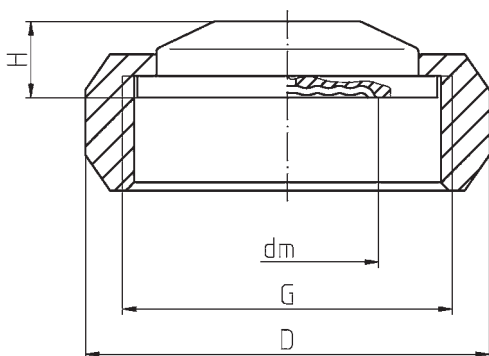
Version	DN	PN	dm	G	D	H
DIN 11851	25	40	23.5	Rd52x1/6	63	14
	32	40	28	Rd58x1/6	70	14
	40	40	36	Rd65x1/6	78	14
	50	25	48	Rd78x1/6	92	15
	65	25	48	Rd95x1/6	112	16
	80	25	48	Rd110x1/4	127	80

Threaded socket DIN 11851 type C/DIN 11887 type A (male)



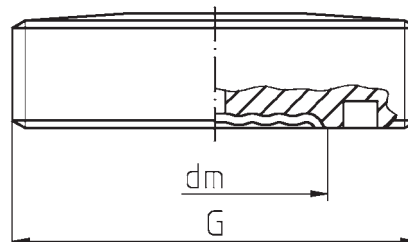
Version	DN	PN	dm	G	H
DIN 11851	25	40	23.5	Rd52x1/6	21
	32	40	28	Rd58x1/6	21
	40	40	36	Rd65x1/6	21
	50	25	48	Rd78x1/6	21
	65	25	-	Rd95x1/6	-
	80	25	-	Rd110x1/4	-

Socket and union nut SMS 1147 (female)



Version	DN	PN	dm	G	D	H
SMS standard	1½"	40	36	Rd60x1/6	74	14
	2"	40	48	Rd70x1/6	84	14
	2½"	25	48	Rd85x1/6	100	14

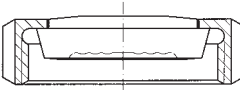
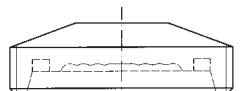
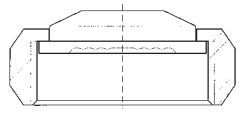
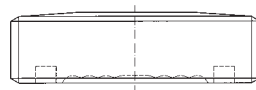
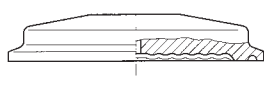
Threaded socket SMS 1147 (male)



Version	DN	PN	dm	G	H
SMS standard	1½"	40	36	Rd60x1/6	17
	2"	40	48	Rd70x1/6	17
	2½"	25	48	Rd85x1/6	17

Diaphragm seals MD 50/51/60

DG: M

	MD 50 for hygienic processes, grooved union nut DIN 11851 (female)							
	Nominal diameter DN	Nominal pressure PN	Minimum range* (in bar) at nominal size				Part no.	Price €
			63	100	160	DMU		
	25	40	4	4	4	1	31300W	
	32	40	0.6	1.6	1.6	1	31301W	
	40	40	0.6	0.6	0.6	1	31302W	
	50	25	0.6	0.6	0.6	0.6	31303W	
	65	25	0.6	0.6	0.6	0.6	31304W	
	MD 50 for hygienic processes, threaded socket DIN 11851 (male)							
	Nominal diameter DN	Nominal pressure PN	Minimum range* (in bar) at nominal size				Part no.	Price €
			63	100	160	DMU		
	25	40	4	4	4	1	31306W	
	32	40	0.6	1.6	1.6	1	31307W	
	40	40	0.6	0.6	0.6	1	31308W	
	50	25	0.6	0.6	0.6	0.6	31309W	
	65	25	0.6	0.6	0.6	0.6	31310W	
	MD 51 for hygienic processes, grooved union nut SMS 1147 (female)							
	Nominal diameter DN	Nominal pressure PN	Minimum range* (in bar) at nominal size				Part no.	Price €
			63	100	160	DMU		
	1½"	40	0.6	0.6	0.6	1	31314W	
	2"	40	0.6	0.6	0.6	0.6	31315W	
	2½"	25	0.6	0.6	0.6	0.6	31316W	
	MD 51 for hygienic processes, threaded socket SMS 1147 (male)							
	Nominal diameter DN	Nominal pressure PN	Minimum range* (in bar) at nominal size				Part no.	Price €
			63	100	160	DMU		
	1½"	40	0.6	0.6	0.6	1	31320W	
	2"	40	0.6	0.6	0.6	0.6	31321W	
	MD 60 clamp connection ISO 2852							
	Nominal diameter DN	Nominal pressure PN	Minimum range* (in bar) at nominal size				Part no.	Price €
			63	100	160	DMU		
	¾"	40	6	---	---	1.6	31913W	
	1"	40	4	4	---	1	31914W	
	1½"	40	0.6	0.6	1.6	1	31324W	
	2"	40	0.6	0.6	0.6	0.6	31325W	
	2½"	25	0.6	0.6	0.6	0.6	31326W	

* Valid for standard filling liquid with direct mounting (without capillary tube) at a room temperature and temperature of the medium of 20 °C.

i

See page 424 for extra charges for options, mounting and accessories.