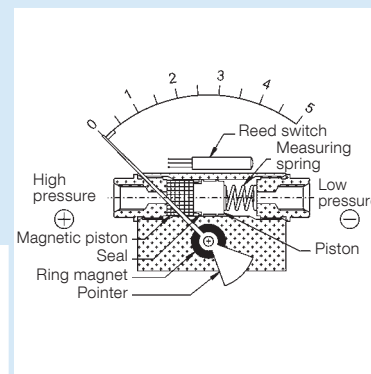


# Magnetic piston type pressure gauges with displays at both sides for differential pressure – high overload protection

NEW



- 2 displays for site condition independence
- Extremely compact and robust stainless steel measuring system
- IP 65 degree of protection for pressure gauge and switching contact
- Leak-proof due to mechanical separation of pressure chamber and display



**Application** For differential pressure measurements at very high static pressures. For gaseous and liquid, non-adhesive media that are not highly viscous. Particularly suitable for monitoring filter elements in process engineering. Displays on both sides for site condition independence.

**Description** The pressures act on two pressure chambers separated by a magnetic piston. If there are different pressures in the chambers, the magnetic piston is axially displaced against a compression spring. The magnetic piston transmits this displacement to the pointers by means of a ring magnet mounted to the pointer hub. The differential pressure is directly indicated on both sides. The complete mechanical separation of pressure chamber and display excludes the possibility of leaks.

## Technical specifications

**Type**  
MAG 63/80/100 Dif D301

**Nominal size**  
63–100 mm

**Accuracy**  
±5 % of full scale value  
(at increasing differential pressure)  
Ranges (EN 837-3/5)  
0/0.5 bar to 0/10 bar

**Maximum static pressure**  
350 bar

## Overpressure safety

Up to the maximum static pressure at both sides

## Operating temperature range

Medium:  $T_{max} = +80\text{ °C}$   
Ambient:  $T_{min} = 0\text{ °C}$   
 $T_{max} = +80\text{ °C}$

## Degree of protection

IP 65 (EN 60529)

## Standard version

**Connection (wetted part)**  
2 x G $\frac{1}{4}$  female thread, parallel, bottom,  
distance 54 mm

**Connection block**  
Aluminium

**Measuring element (wetted part)**  
Compression spring stainless steel 301

**Magnetic piston (wetted part)**  
Aluminium, stainless steel 301,  
strontium ferrite and sealing materials

**Seal (wetted part)**  
FKM (Viton)

## Dial

Aluminium, white  
Dial marking black (bar)  
Scale angle 90°

## Pointer

Aluminium, black

## Housing

Stainless steel 304  
with rubber sealing ring at the front

## Window

Instrument glass

## Options

- Other connection threads
- Connection on left and right sides
- Acrylic glass window
- Electrical contacts (Reed contacts)
- Filter in "plus" connection
- Glycerine filling
- Max. pointer
- Special scales

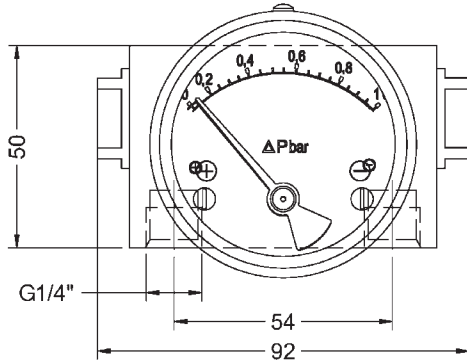


Prices on request.

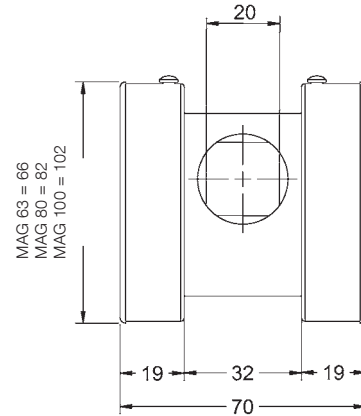
# Magnetic piston type pressure gauges for differential pressure – high overload protection Type D 3 NG 63/80/100

Types and dimensions (mm)

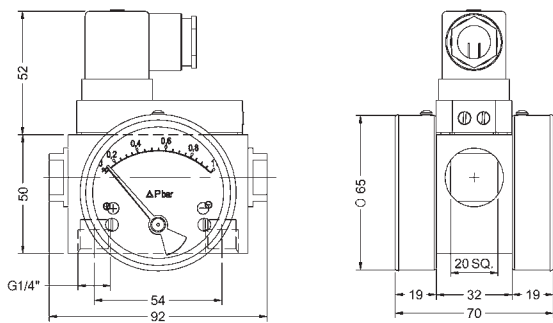
Connection on right and left sides



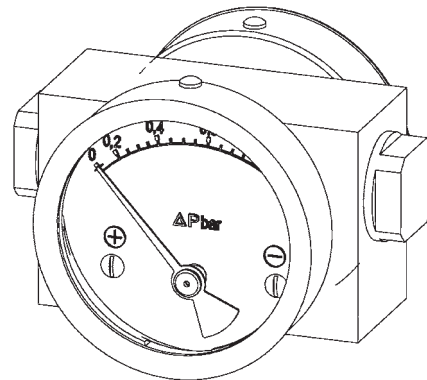
Connection on left and right sides



Connection on right and left sides with electrical contact



3D view

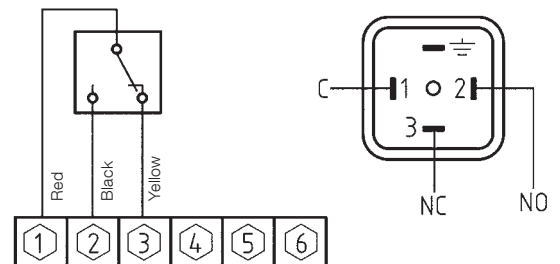


Technical specifications electrical contact

Version: Reed contact, single, changeover contact (SPDT)

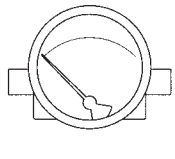
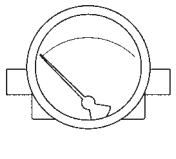
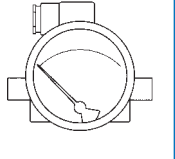
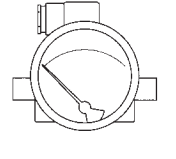
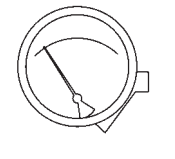
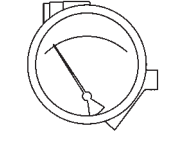
- Max. switching voltage: AC/DC 30 V
- Max. switch rating: AC 3 VA–DC 3 W
- Max. current: AC/DC 300 mA
- Switching hysteresis: approx. 5 %
- Adjustment range: 35–100 % of full scale value
- Electrical connection: ISO 4400 connector (DIN 43650-A)

Wiring diagram



# Magnetic piston type pressure gauges/magnetic diaphragm pressure gauges for differential pressure

DG: M

Type	MAG 80 Dif, D 312	MAG 100 Dif, D 312	MAG 80 Dif, RK1.W, D 312	MAG 100 Dif, RK1.W, D 312	MAG 115 Dif, D 311	MAG 115 Dif, RK1.W, D 311
Version						
Housing Ø	80	100	80	100	115	115
Housing	Stainless steel 304 with rubber sealing ring at the front					
Measuring element	See data sheet					
Accuracy	±3 % of full scale value (at increasing differential pressure)					
Connection	2 x G¼ female thread				2 x ½ NPT female thread	
Max. static pressure	PN 100				PN 2.4	
Contact type	---	---	Reed, single, changeover contact*	Reed, single, changeover contact*	---	Reed, single, changeover contact*
Electrical connection	---	---	Connector and junction box as per ISO 4400 (DIN 43650-A)	Connector and junction box as per ISO 4400 (DIN 43650-A)	---	Connector and junction box as per ISO 4400 (DIN 43650-A)
Range	Part no.	Part no.	Part no.	Part no.	Part no.	Part no.
<b>Price €</b>						
0/2.5 mbar	---	---	---	---	88002311	88013311
0/4 mbar	---	---	---	---	88003311	88014311
0/6 mbar	---	---	---	---	88004311	88015311
0/10 mbar	---	---	---	---	88005311	88016311
0/16 mbar	---	---	---	---	88006311	88017311
0/25 mbar	---	---	---	---	88007311	88018311
0/40 mbar	---	---	---	---	88008311	88019311
0/60 mbar	---	---	---	---	88009311	88020311
0/100 mbar	---	---	---	---	88010311	88021311
0/160 mbar	---	---	---	---	---	---
<b>Price €</b>						
0/0.25 bar	88002312	88013312	88022312	88033312	---	---
0/0.4 bar	88003312	88014312	88023312	88034312	---	---
0/0.6 bar	88004312	88015312	88024312	88035312	---	---
0/1 bar	88005312	88016312	88025312	88036312	---	---
0/1.6 bar	88006312	88017312	88026312	88037312	---	---
0/2.5 bar	88007312	88018312	88027312	88038312	---	---
0/4 bar	88008312	88019312	88028312	88039312	---	---
0/6 bar	88009312	88020312	88029312	88040312	---	---
0/10 bar	88010312	88021312	88030312	88041312	---	---

\* Please specify required switching point!

i

Please enquire for prices for magnetic piston type pressure gauges with display at both sides.