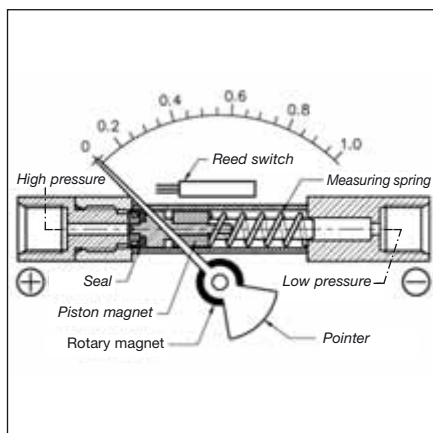


Magnetic piston type pressure gauges for differential pressure – high overload protection



- Extremely compact and robust stainless steel measuring system
- Selectable maximum static pressure PN 100/250/400
- Switching contacts can be retrofitted
- IP 65 protection for pressure gauge and switching contact
- Leak-proof due to mechanical separation of pressure chamber and display
- Various types of connections
- Housing diameters 80 and 100 mm
- Optional glycerine filling



Application

For differential pressure measurements with very high static pressures. For gaseous and liquid, non-adhesive media which are not highly viscous. Particularly suitable for monitoring filters, pumps, pipe systems and cooling circuits.

Type

MAG 80/100 Dif D312

Nominal size

80–100 mm

Function

The pressures act on two pressure chambers separated by a piston magnet. If there are different pressures in the chambers, the piston magnet is axially displaced against a pressure spring. This displacement is transmitted from the piston magnet to the pointer via a rotary magnet mounted to the pointer hub. The differential pressure is directly displayed.

The complete mechanical separation of pressure chamber and display excludes the possibility of leaks.

Accuracy of measurement

±3 % of full scale value (at increasing differential pressure)

Ranges (EN 837-3/5)

0/0.25 bar to 0/10 bar

Maximum static pressure

100 bar

Overpressure safety

Up to the maximum static pressure on both sides

Operating temperature range

Medium: $T_{max} = 100\text{ °C}$

Ambient: $T_{min} = 0\text{ °C}$

$T_{max} = 80\text{ °C}$

Protection

IP 65 (EN 60529)

Standard version

Connection (wetted parts)

Stainless steel 316, on left and right hand side /directly opposite each other)

2 x G¹/₄ female thread – spanner size 17 (EN 837-3/7.3)

Connection cover

Plastic, glass-fibre reinforced, black

Measuring element (wetted part)

Pressure spring

Stainless steel 1.4310

Magnetic piston (wetted part)

Stainless steel 1.4401/Strontium ferrite

Seal (wetted part)

NBR

Dial

Aluminium, white

Dial marking black/red (bar/psi)

Scale angle 90°

Pointer

Aluminium, black

Housing

Stainless steel 304 with rubber sealing ring at the front

Front glass

Instrument glass

Mounting

Wall mounting via a back mounting plate (optional) or pipe mounting by a combination of back plate and fixing clamp for 2" pipe (optional).

Options

- Back mounting plate with fixing clamp
- 3-hole fixing, panel mounting bezel
- Max. static pressure PN 250/400
- Other connection threads
- Other connection designs
- Acrylic front glass
- Electrical contacts (Reed contacts)
- Filter in the „plus“ connection
- Glycerine filling
- Ref. pointer
- Special scales

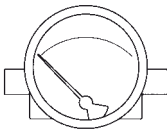
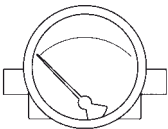
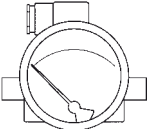
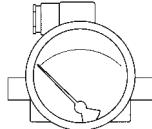
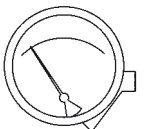
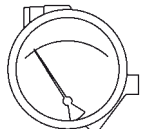
Magnetic piston type pressure gauges for differential pressure – high overload protection Type D 3 NG 80/100

Types and dimensions (mm)

<p>Connection on left and right hand side</p>	<p>Connection on left and right hand side 3-hole fixing, panel mounting bezel</p>
<p>Connection on left and right hand side with electrical contact</p>	<p>Back mounting plate and fixing clamp</p>
<p>Technical specifications electrical contact</p> <p>Version: Reed contact, single pole changeover (SPDT)</p> <p>Max. switching voltage: AC/DC 175 V Max. switch rating: AC 5 VA – DC 5 W Max. current: AC/DC 250 mA Switching hysteresis: approx. 5 % Adjustment range: 35–100 % of full scale value Electrical connection: plug DIN 43650-A</p>	<p>Wiring diagram</p>

Magnetic piston type pressure gauges/magnetic diaphragm pressure gauges for differential pressure

DG: M

Type	MAG 80 Dif, D312	MAG 100 Dif, D312	MAG 80 Dif, RK1.W, D312	MAG 100 Dif, RK1.W, D312	MAG 115 Dif, D311	MAG 115 Dif, RK1.W, D311
Version						
Housing Ø	80	100	80	100	115	115
Housing	Stainless steel 304 with rubber seal at the front					
Meas. elem	refer to data sheet					
Accuracy	±3 % of full scale value (at increasing differential pressure)					
Connection	2 x G ¹ / ₄ female thread				2 x ¹ / ₈ NPT female thread	
Max. static pressure	PN 100				PN 2,4	
Contact type	---	---	Reed, single, changeover*	Reed, single, changeover*	---	Reed, single, changeover*
Electrical connection	---	---	Plug DIN 43650-A	Plug DIN 43650-A	---	Plug DIN 43650-A
Range	Part no.	Part no.	Part no.	Part no.	Part no.	Part no.
Price €						
0/2,5 mbar	---	---	---	---	88002311	88013311
0/4 mbar	---	---	---	---	88003311	88014311
0/6 mbar	---	---	---	---	88004311	88015311
0/10 mbar	---	---	---	---	88005311	88016311
0/16 mbar	---	---	---	---	88006311	88017311
0/25 mbar	---	---	---	---	88007311	88018311
0/40 mbar	---	---	---	---	88008311	88019311
0/60 mbar	---	---	---	---	88009311	88020311
0/100 mbar	---	---	---	---	88010311	88021311
0/160 mbar	---	---	---	---	---	---
Price €						
0/0,25 bar	88002312	88013312	88022312	88033312	---	---
0/0,4 bar	88003312	88014312	88023312	88034312	---	---
0/0,6 bar	88004312	88015312	88024312	88035312	---	---
0/1 bar	88005312	88016312	88025312	88036312	---	---
0/1,6 bar	88006312	88017312	88026312	88037312	---	---
0/2,5 bar	88007312	88018312	88027312	88038312	---	---
0/4 bar	88008312	88019312	88028312	88039312	---	---
0/6 bar	88009312	88020312	88029312	88040312	---	---
0/10 bar	88010312	88021312	88030312	88041312	---	---

* Please specify required switching point!